

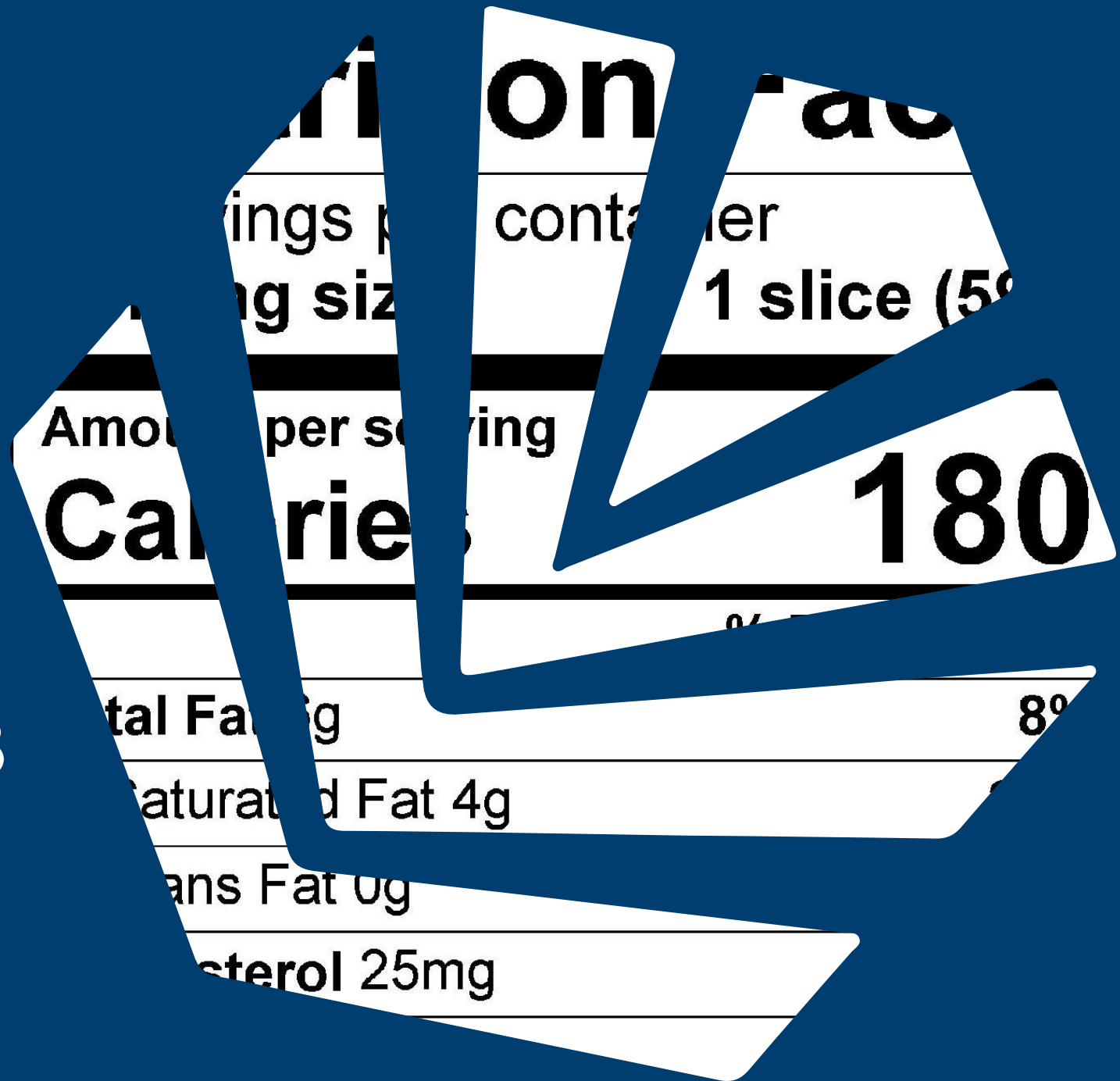


WEBINAR

Genesis Foods Update Version 11.13

Wednesday, 29 March, 2023

11:00 AM PT | 1:00 PM CT | 2:00 PM ET

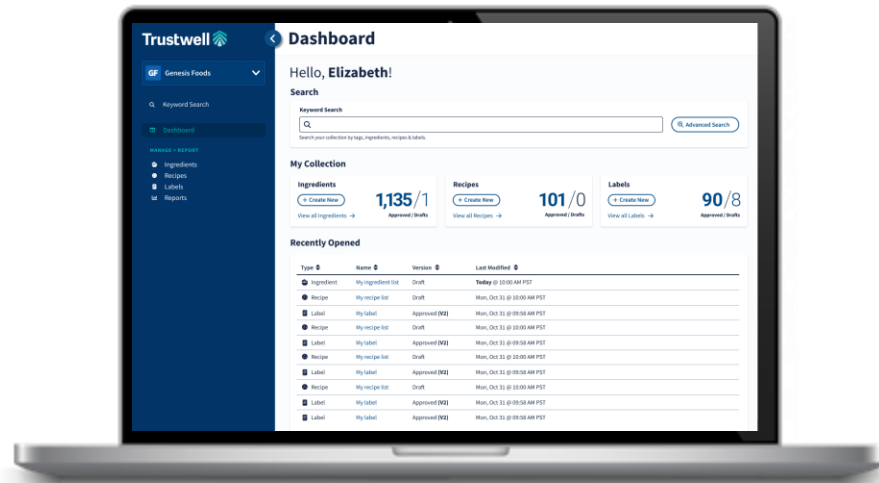




Together - we are now Trustwell

Bringing together the pioneering achievements of two amazing products – Genesis Foods and FoodLogiQ – Trustwell is setting a new standard for compliance, transparency, and quality in the food industry – all the way from recipe to recall.

Trustwell Connect Platform



Our mission is to help remove the complexity of product development and regulatory compliance for the food, beverage, and supplement industries through software, services, and nutritional databases.

- Genesis Foods
- Genesis Supplements

FSMA Compliant Supply Chain Management and Traceability

- FoodLogiQ Connect

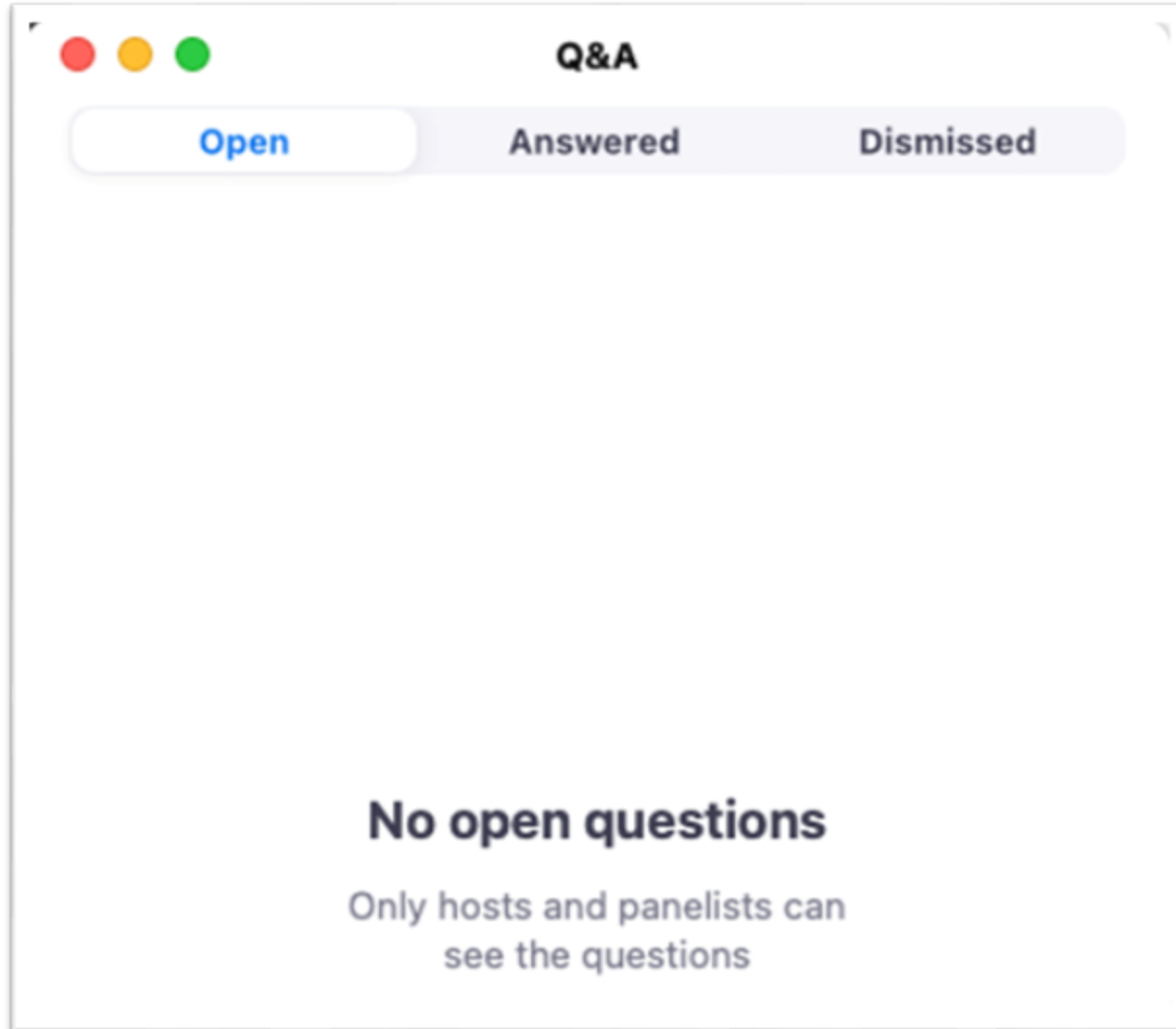
Genesis Foods Product Formulation & Labeling Software

Genesis Foods, first released in 1991, is designed to help users manage processes, overcome industry challenges, and meet federal requirements. Industry professionals use Genesis for quick and accurate nutrient evaluation, virtual product development, nutrition labeling, and regulatory compliance.

- Product Development
- Formulation Analysis
- Menu Analysis
- Reporting
- Label Creation
- Regulatory Compliance



Please Note!



- ✓ The webinar is being recorded
- ✓ All webinars available on our website
- ✓ Submit your questions in the Q&A box
- ✓ We'll email a copy of the recording and the slides following the webinar

What We'll Cover Today



Genesis Food Version 11.13 enhancements

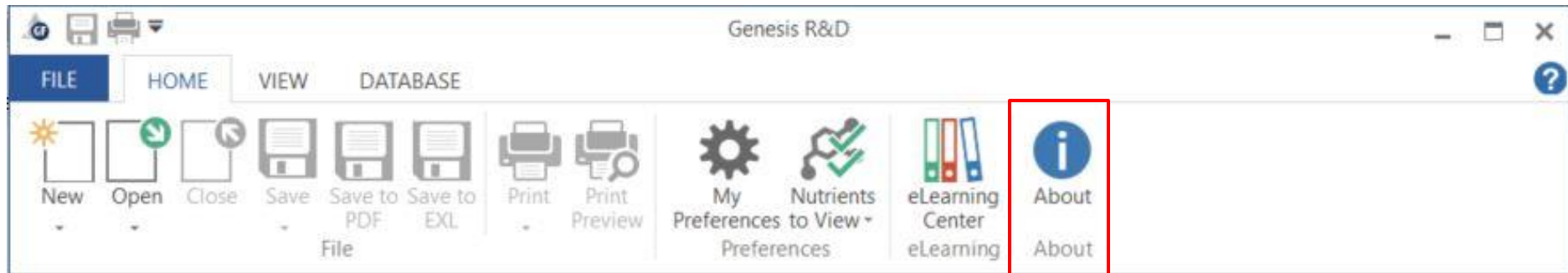
- U.S. Label – Footnote for Simplified Labels
- Mexico Front-of-Package Phase 2 Changes
- Canada Sodium and Potassium DVs
- Calorie Calculations
- Advanced Labels – Bringing in Multiple Recipes
- Q&A



Genesis Foods Version 11.13 Updates

Checking Your Version Number in Genesis Foods

- To check which version you have running in Genesis Foods, click on the About button.
- This lists your version number as well as account and license information.
- **Cloud:** current subscriptions are updated to latest releases automatically.
- **On-Premise** (desktop installation): if you do not see the latest version, check with your IT staff or contact sales@trustwell.com to discuss your account status.



U.S. Label – Footnote Option for Simplified Label on Small Packages

When using the Simplified label format, a newly added option allows display of a shortened version of the “Not a significant source of...” footnote.

This option states “other nutrients” instead of listing the individual nutrients by name.

Total Carbohydrate 3g	1%
Protein 0g	
Not a significant source of other nutrients.	
*The % Daily Value tells you how much a nutrient in a serving of food contributes to a daily diet. 2,000 calories a day is used for general nutrition advice.	

From FDA Guidance - December, 2019:

*Given the small package size of certain products and the potentially long statement that would be required if the label had to identify each nutrient that is present in insignificant amounts (see 21 CFR 101.9(f)), we consider 21 CFR 101.9(g)(9) to permit an alternative means of compliance with respect to the nutrition labeling for certain products sold in small packages for which the addition of such statement would be impracticable. In lieu of providing the “Not a significant source of _____” statement as required in 21 CFR 101.9(f)(4), we recommend that the label for such packages bear a statement such as “**Not a significant source of other nutrients**” at the bottom of the simplified Nutrition Facts label on such products sold in small packages.*

<https://www.fda.gov/media/133699/download>

Mexico Front-of-Package Labeling Phase 2 Changes

- **Phase 1** – October 1, 2020* – September 30, 2023
- **Phase 2** – October 1, 2023 – September 30, 2025
- **Phase 3** – Begins and continues after October 1, 2025
- [Norma Oficial Mexicana NOM-051-SCFI/SSA1-2010](#))



Phase 2 Changes and Thresholds

Phase 2 criteria changes include:

- Excess Calories Liquid
 - Warning symbol criteria: ≥ 70 kcal total OR ≥ 8 kcal from added sugars (was previously ≥ 10 kcal from added sugars).
- Excess Sugars Liquid
 - Warning symbol criteria: *beverages with <10 kcal from added sugars are no longer exempt.*
- Excess Sodium Solids
 - Warning symbol criteria: ≥ 1 mg sodium per kcal or ≥ 300 mg (was previously 350 mg).

Thresholds used to determine requirement of warning seals

100-gram solid products and 100-milliliter liquid products				
Energy (kcal)	Sugars	Saturated Fats	Trans Fats	Sodium
≥ 275 kcal total (solid product) ; ≥ 70 kcal total or ≥ 8 kcal added sugars (liquid product)	$\geq 10\%$ total kcal from added sugars.	$\geq 10\%$ total kcal from saturated fats	$\geq 1\%$ total kcal from trans fats	≥ 1 mg of sodium per kcal or ≥ 300 mg , Calorie free beverages: ≥ 45 mg of sodium
EXCESO CALORÍAS (Excess Calories)	EXCESO AZÚCARES (Excess Sugars)	EXCESO GRASAS SATURADAS (Excess Saturated Fats)	EXCESO GRASAS TRANS (Excess Trans Fats)	EXCESO SODIO (Excess Sodium)

See our recent article about Mexico's Phase 2 Front of Package Labeling:

<https://esha.com/blog/phase-2-of-mexicos-front-of-pack-nutrition-labeling-updates/>

See our previous webinar on Mexico's Phase 1 Labeling:

<https://esha.com/webinars/complying-with-mexico-new-front-of-package-and-nutrition-labeling-regulations/>

Canada Labeling - Sodium and Potassium Daily Values

In October 2022, Health Canada amended the potassium and sodium Daily Values for specific age groups. These new Daily Values (DVs) impact the calculation of DVs for the Nutrition Facts table and specific nutrient content claims.

- Infants 6 to 12 mos: DV for potassium 860 mg (up from 700 mg)
- Children 1 to < 4 years: DV for sodium 1200 mg (down from 1500mg)
- Children 1 to < 4 years: DV for potassium 2000 mg (down from 3000 mg)
- All other age groups: DV for potassium 3400 mg (down from 4700 mg)

In Genesis Foods, these changes have been implemented and may result in a change to %DV displayed on Canadian Nutrition Information labels.

With no change to your formula, the label may show a different %DV than before.

Depends on the label selection you make:

Adult vs Child

Cholesterol / Cholestérol 30 mg	
Sodium 150 mg	7 %
Potassium 250 mg	7 %
Calcium 30 mg	2 %

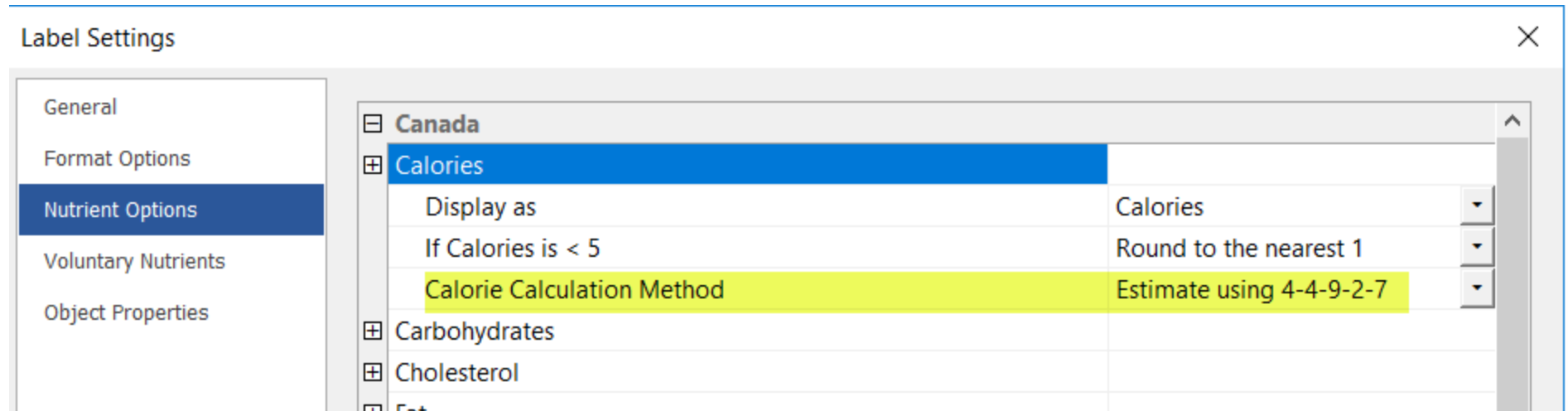
Canada – Default Calorie Calculations

Health Canada lists the average factors for energy values of protein, fat, carbohydrates, and alcohol with corresponding Cal/g. Genesis Foods has been updated to include the calories from alcohol when present.

The updated calculation follows (Calories X grams):

$$(4 \times \text{Protein}) + (9 \times \text{Fat}) + (4 \times [\text{Carbs} - \text{Total Dietary Fiber}]) + (2 \times \text{Total Dietary Fiber}) + (7 \times \text{Alcohol})$$

Note: The default Calorie Calculation Method for Canada uses the Estimate using 4-4-9-2-7. As a result, all newly created Recipes use this calorie calculation method.



Advanced Labels – Bringing in Multiple Recipes at Once

In Genesis Foods, use the Advanced Labels settings to create:

- Dual Column Labels for different forms of a food (e.g., as packaged and as prepared)
- Aggregate Labels (e.g., for variety packs)
- Labels that list DVs for multiple population groups

Bring in multiple recipes to your Advanced Label using the Shift key or the Ctrl key to select from your list of Recipes.

Nutrition Facts		Chocolate Chip	Oatmeal Raisin	Peanut Butter
12 servings per container				
Serving size 1 bar		(43g)	(38g)	(40g)
Amount per serving				
Calories		180	140	170
		% Daily Value*	% Daily Value*	% Daily Value*
Total Fat		7g 9%	3g 4%	6g 8%
Saturated Fat		2.5g 13%	0g 0%	1.5g 8%
Trans Fat		0g	0g	0g
Cholesterol		0mg 0%	0mg 0%	0mg 0%
Sodium		105mg 5%	125mg 5%	160mg 7%
Total Carbohydrate		30g 11%	30g 11%	26g 9%
Dietary Fiber		3g 11%	2g 7%	2g 7%
Total Sugars		12g	11g	13g
Includes Added Sugars		9g 18%	8g 16%	10g 20%
Protein		2g	2g	4g
*The % Daily Value tells you how much a nutrient in a serving of food contributes to a daily diet. 2,000 calories a day is used for general nutrition advice.				
Vitamin D		0mcg 0%	0mcg 0%	0mcg 0%
Calcium		17mg 2%	143mg 10%	36mg 2%
Iron		1mg 6%	1mg 6%	1mg 6%
Potassium		101mg 2%	100mg 2%	116mg 2%

Genesis Foods Training

Genesis Foods Professional (12 CEUs): This training session covers the fundamentals of the Genesis Food program with a primary focus on FDA regulations: creating ingredients and composite ingredients, building recipes/formulas, nutrition analysis, moisture loss, reporting, labeling, best practices, and much more. In addition, this session covers a comprehensive regulatory review.

Genesis Foods Advanced Training (6 CEUs): The Advanced session builds upon the skills learned in the Professional training and offers deeper learning on topics including PDCAAS, International Food Labeling, Advanced Label Settings, and more.

Learn More: Visit www.esha.com for the full list of upcoming classes or contact training@trustwell.com to learn about our private group training sessions.

Location	Date	Training
Training Center Oakbrook, IL	April 11-12, 2023 April 13, 2023	2-Day Genesis R&D Foods Professional 1-Day Genesis R&D Foods Advanced
Training Center Oakbrook, IL	May 16-17, 2023 May 18, 2023	2-Day Genesis R&D Foods Professional 1-Day Genesis R&D Foods Advanced
Training Center Oakbrook, IL	June 13-14, 2023 June 15, 2023	2-Day Genesis R&D Foods Professional 1-Day Genesis R&D Foods Advanced
Training Center Oakbrook, IL	July 18-19, 2023 July 20, 2023	2-Day Genesis R&D Foods Professional 1-Day Genesis R&D Foods Advanced
Online	Aug. 14-17, 2023 Aug. 22-23, 2023	2-Day Genesis R&D Foods Professional 1-Day Genesis R&D Foods Advanced

Upcoming Regulatory Seminar

FSMA 204 Compliance and Implementation | Wednesday, April 5, 2023

During this seminar, our traceability expert will provide an in-depth review of the final rule, discuss industry best practices for compliance, and detail key considerations for building a traceability plan. We will present real-world examples and scenarios to help companies understand their data requirements and trading partner dependencies, as they navigate through this complicated process.

Learning Outcomes:

- Accessing FDA FSMA 204 resources
- How to identify foods covered by the rule and the FTL
- Defining roles, CTE's and KDE's
- How to search for "hidden" products and events in your supply chain
- How to capture data, and storage and sharing requirements
- Industry initiatives and best practices for traceability
- Considerations for building a traceability plan

Register: <https://esha.com/training/regulatory-seminar-fsma-204-compliance-planning-and-implementation/>



CONTACT US

Phone: 503-585-6242

Sales: sales@trustwell.com

Support: support@trustwell.com

Consulting Services: cs@trustwell.com

Training: training@trustwell.com

Thank You

HELPFUL RESOURCES

LinkedIn: linkedin.com/company/trustwell-llc/

Website: www.trustwell.com